

## The CLUB WITH AN INTERNATIONAL DIMENSION



### Royal Over-Seas League

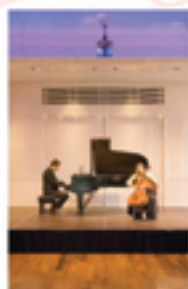
*50% joining fee  
discount for  
Kingdom to Kingdom readers*



The Royal Over-Seas League is a non profit making mutual society which offers members a wide variety of benefits including access to centrally situated clubhouses in London and Edinburgh.



The London clubhouse, comprising two period houses, is in a prime location bordering Green Park and near the Ritz Hotel. Over-Seas House has a private garden, al fresco dining, restaurant, buttery for light meals, bar, drawing room, 80 bedrooms and seven conference and private dining rooms. The Edinburgh clubhouse is centrally situated at 100 Princes Street.



In addition to economical central London pricing\*, the League offers a varied events programme, inter-club younger members group, quarterly journal, discounts on certain cruises and tours, in-house art exhibitions and concerts, evening speakers and short term access to over 90 other clubs around the world in Canada, Australia, New Zealand, Singapore, Hong Kong, Malaysia, India, Pakistan, South Africa, Kenya, Gibraltar, Ireland, Spain, USA and elsewhere.

The specially discounted joining fee for *Kingdom to Kingdom* readers is £56. The 2009 half-year subscription, starting 1 July, is £53. The joining fee is waived for those aged 17-25.



For further information please contact the Membership Department, remembering to quote KINGDOM TO KINGDOM.

Over-Seas House, Park Place, St James's Street, London SW1A 1LR

Tel: 020 7408 0214 Fax: 020 7499 6738

(Enquiries: 9.00am-5.00pm Monday-Friday - exts. 214 and 216)

Website: [www.rosl.org.uk](http://www.rosl.org.uk) E-mail: [info@rosl.org.uk](mailto:info@rosl.org.uk)

*\*London clubhouse: bar food £4.85-£6.00; three course lunch/dinner in the restaurant from £24.95; in the garden £22.75; scones, Devon cream and preserves with tea or coffee in the garden, buttery or drawing room £6.70; evening events from £4.00; bedrooms £95 - £180; complimentary e-mail and computer facilities in Central Lounge, broadband internet connection in bedrooms. Prices correct at time of design, May 2009.*